



Global Fund's Gender Equality Marker

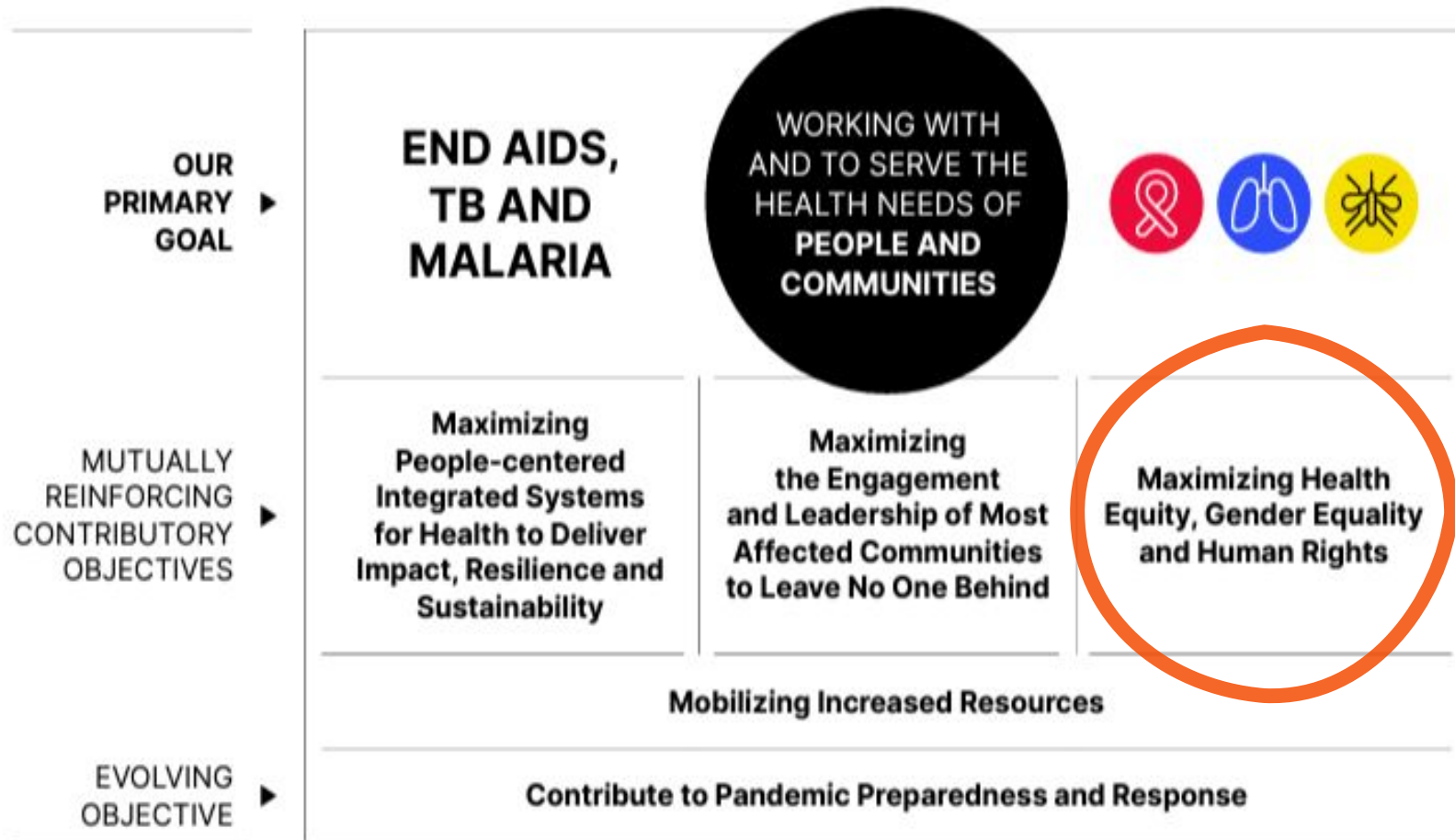
Why is gender equality a priority for The Global Fund?

- We cannot end HIV, TB and malaria as epidemics without prioritizing gender equality.
- **Gender norms, roles and relationships influence health in multiple ways:** they contribute to risk-taking behavior, amplify vulnerabilities, impact access to health services and affect decision-making power within relationships and over health.
- Health strategies that incorporate a gender perspective are **more effective and sustainable** than those that do not.
- HIV, TB and malaria interventions have the potential to either reinforce or mitigate gender inequalities. This means our work to end the epidemics is also a **powerful tool in the fight for gender equality.**

Gender and HIV

- **Adolescent girls and women** in generalized HIV epidemics are more likely to become infected with HIV than men. In sub-Saharan Africa, six in seven new HIV infections among adolescents aged 15-19 are among adolescent girls.
- Globally, **men** are less likely to know their HIV status and access and adhere to treatment than women and are more likely to die from AIDS. While men comprise 47% of all people living with HIV, they account for 68% of all AIDS-related deaths.
- **Transgender women** are at 34 times greater risk of HIV than other adults.
- **Female sex workers** are at 26 times greater risk than the general population.
- **Inequalities are the key reason why the 2020 global targets were missed**

Global Fund Strategy overview 2023-2028

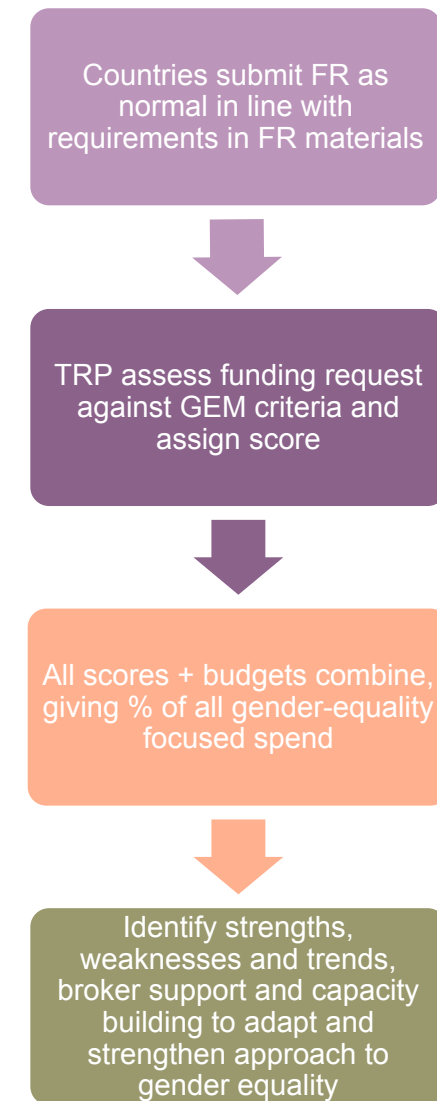


Gender Equality Marker

- The Global Fund is implementing a Gender Equality Marker (GEM) as part of a series of changes to maximize gender equality in GC7.
- The GEM will track the extent to which all GF funding supports gender equality. This is because advancing gender equality is not about one single program, policy or intervention. Instead, it is an approach that should be applied across all interventions at all stages of the grant cycle.
- Specifically, the GEM will provide information about:
 - Which countries are considering and addressing gender inequalities, and where gaps exist; and
 - An estimate of how much of the Global Fund’s overall investment is being targeted toward programs that are gender transformative
- The Global Fund’s GEM is based on the OECD-DAC gender equality policy marker, which is a three-point scoring system that identifies whether gender equality is: **0: Not targeted**, meaning that it has been screened against the minimum criteria for the marker but has not been found to target gender equality; or **1: A significant focus of the funding request**, or **2: A principal focus of the funding request**

Gender Equality Marker criteria

Score	Global Fund Minimum Criteria
<p>Not targeted (score 0):</p> <p>Any funding request not meeting Significant or Principal criteria</p>	<p>The project/programme has been screened against the marker but has not been found to target gender equality.</p> <p>It is strongly recommended that all funding requests are informed by gender analysis so <u>at a minimum</u> the Global Fund investment does no harm and does not reinforce gender inequalities</p>
<p>Significant (score 1):</p> <p>Gender equality is not the principal reason for undertaking the project/programme but is an important and deliberate part of the intervention</p> <p>The proposal must meet <u>all</u> score 1 criteria to receive a score of 1. Funding requests that do not meet all criteria should receive a score of 0.</p>	<p>A gender assessment relevant to each disease component in the funding request has been conducted</p> <p>The findings of the gender assessment have informed the funding request</p> <p>The funding request includes at least one intervention explicitly contributing to advancing gender equality</p> <p>Data and indicators are disaggregated by sex and/or gender where applicable</p> <p>A commitment to routinely collect and analyze sex and/or gender disaggregated data to inform program design, adaptation and understanding of performance</p>
<p>Principal (score 2):</p> <p>Gender equality is a contributory objective of the project/programme and is fundamental in its design and expected results</p> <p>The proposal must meet <u>all</u> score 2 criteria to receive a score of 2.</p>	<p>A gender assessment relevant to each disease component in the funding request has been conducted</p> <p>The findings of the gender assessment have informed the funding request</p> <p>The funding request includes at least three interventions that explicitly contribute to the advancement of gender equality</p> <p>One of the main ambitions of the Global Fund investment is to advance gender equality</p> <p>Performance for the majority of interventions is being measured with sex and/or gender disaggregated indicators</p> <p>A commitment to routinely collect and analyze gender disaggregated data to inform program design, adaptation and understanding of performance</p>



Engagement Opportunities

- Raise awareness of the GEM and promote as a useful tool during Funding Request development
- Engage in gender assessments – must be developed with the full engagement of women in all their diversity
- Action and accountability for low scores

Resources

