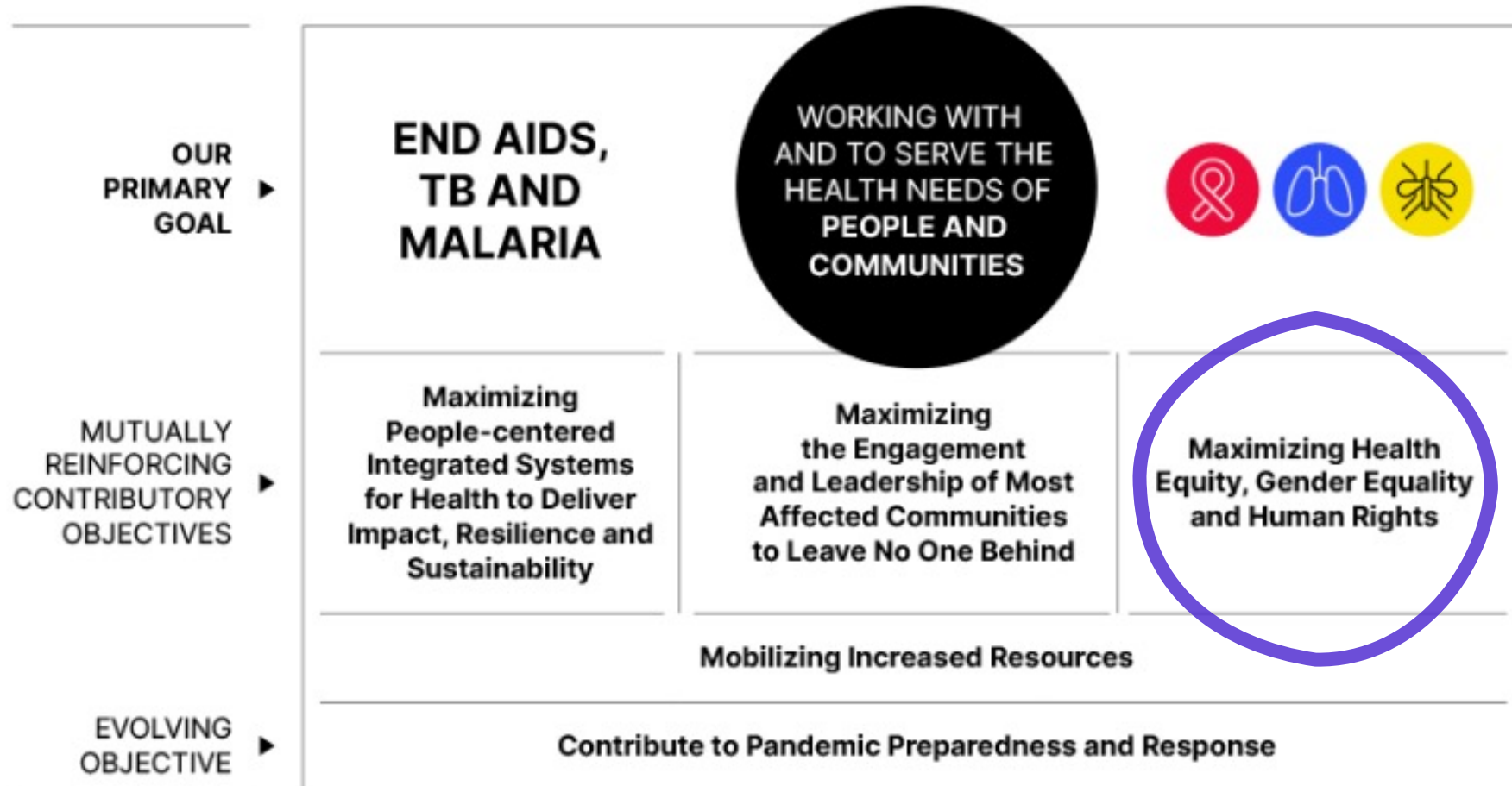




Gender Equality: Reflections on Window 1

Gender equality in the Global Fund 2023-2028 Strategy



What is new in GC7?

Gender Equality

- **Strengthened funding request requirements** on gender equality
- New **Program Essentials** that include gender considerations
- New **Gender Equality Technical Brief**
- New **Gender Equality Marker** across all portfolios
- New **gender equality corporate KPI** covering grant performance and meaningful engagement

TRP Window 1 debrief

Sustainability: The funding request adequately identifies and addresses challenges to sustainability (in line with the TRP Review Criteria).

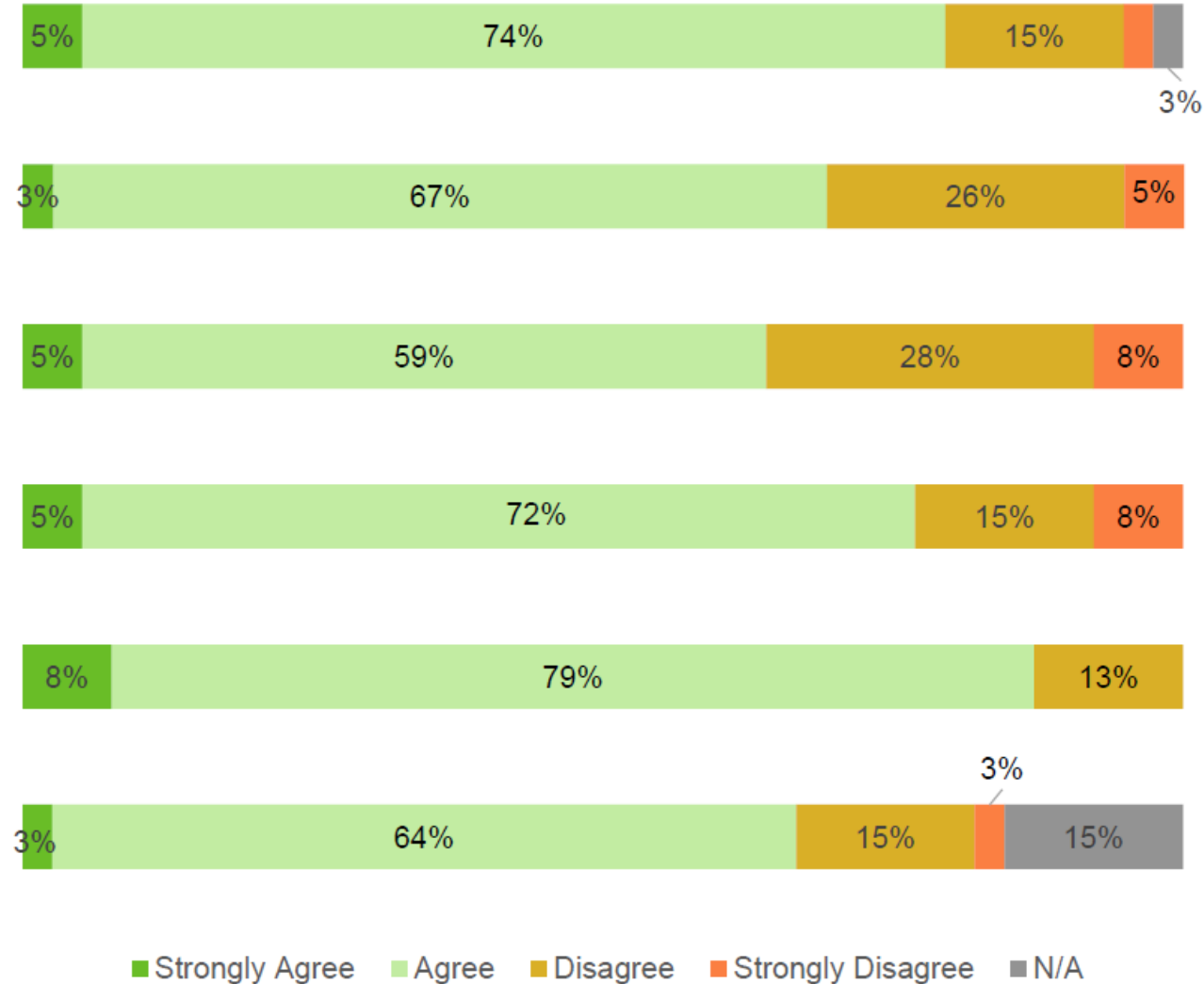
Focus on Gender: The funding request maximizes gender equality by considering and addressing gender inequalities and gender-related barriers that impact on health outcomes.

Focus on Human Rights: The funding request ensures that human rights-related barriers to accessing services are adequately analyzed and addressed to achieve the set targets.

Focus on Equity: The funding request demonstrates investment in equitable health outcomes with proposals to address structural barriers and improve access.

Community Systems & Responses: To what extent are the roles of community-led and -based organizations in service delivery articulated in the funding request? (Scale of Not Articulated to Extremely Well Articulated)

Pandemic Preparedness: The funding request demonstrates appropriate investments to strengthen pandemic preparedness and response.



TRP Recommendations

- Encouraging all FRs to be informed by a **comprehensive gender assessment** conducted with the **meaningful participation** of women and girls
- Where assessments have been done, **ensuring the findings are reflected in activities and budget**
- Ensuring essential gender activities are **budgeted for in the allocation**, not placed in the PAAR
- Follow recently issued **AGYW guidance** and **differentiate services according to intersections**, e.g., for young women selling sex and/or using drugs.
- Better collection and use of sex/gender **disaggregated data**

CRG reflections

In addition to the TRP observations and recommendations...

- Encourage gender to be considered in relation **to people's risk, vulnerability and health outcomes**, as well as a barrier to service access
- Encourage the funding request aims to maximize gender equality by **tackling the underlying causes of gender inequality** in health